



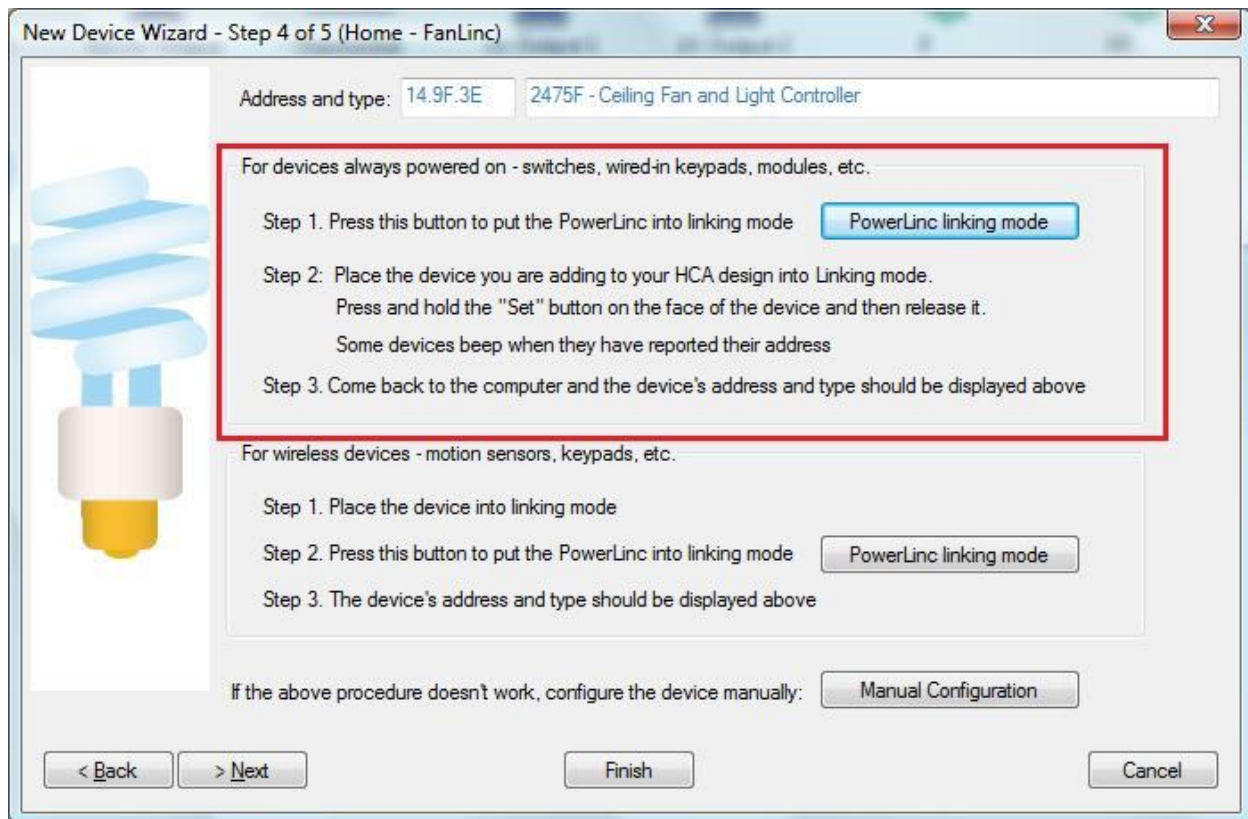
HCA Tech Note 202

Working with the Insteon FanLinc

<http://www.smarthome.com/fanlinc-insteon-2475f-ceiling-fan-and-light-controller-fixture-module-dual-band.html>

The complexity of using the FanLinc in HCA is that there are two independently controllable devices in one package. In HCA each device represents a single controllable unit. Because of this, when this type of device is added to your design, two HCA devices are added.

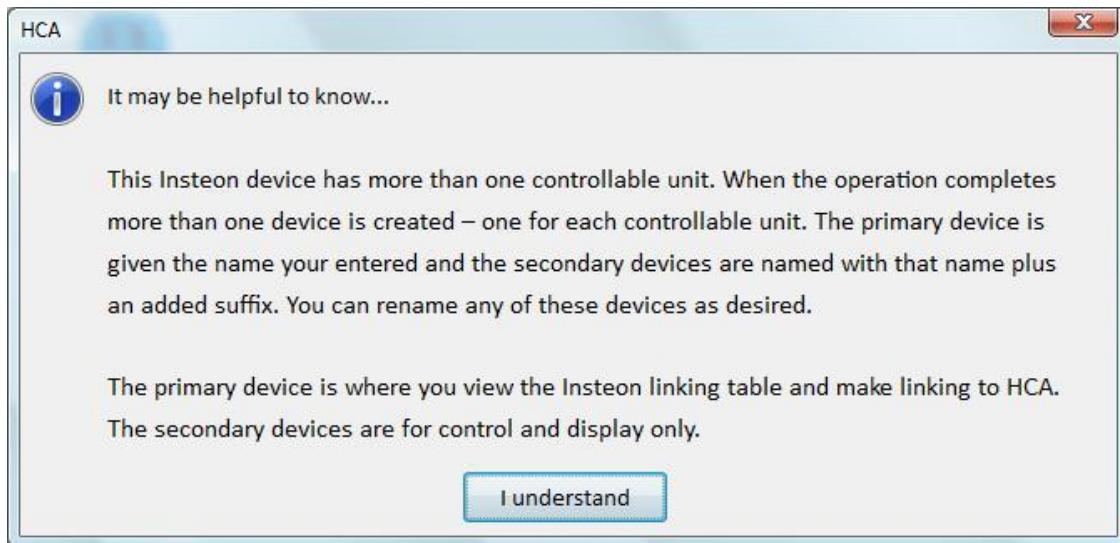
Using the FanLinc with HCA starts by adding it to your design. You need to be able to access the "Set" buttons on it to establish a link to it. The set buttons are located on the top edge of the module. There is a set button for the light and a second one for the fan. You can use either when adding it to HCA.



After you complete the Add Wizard, this popup messages appears:



HCA Tech Note 202



The device that represents the FanLinc light becomes the "primary" device and the device for the Fan becomes the "secondary" device. Either of the devices can be used in programs or schedules to control that part of the FanLinc.

When you open the properties of the primary device the "Insteon" and "Linking" tabs are available. When you open the properties of the secondary devices the Insteon tab directs you to the primary device and the linking tab is not seen.

You can also use the Visual Scene Editor (VSE) with the FanLinc. Using the VSE you can build scenes that are:

- Controlled by HCA to turn on or off the fan and/or light and other devices simultaneously
- Controlled by an Insteon controller (KeypadLinc, IO Module Input) that turns on or off the fan and/or light