



# HCA Tech Note 209

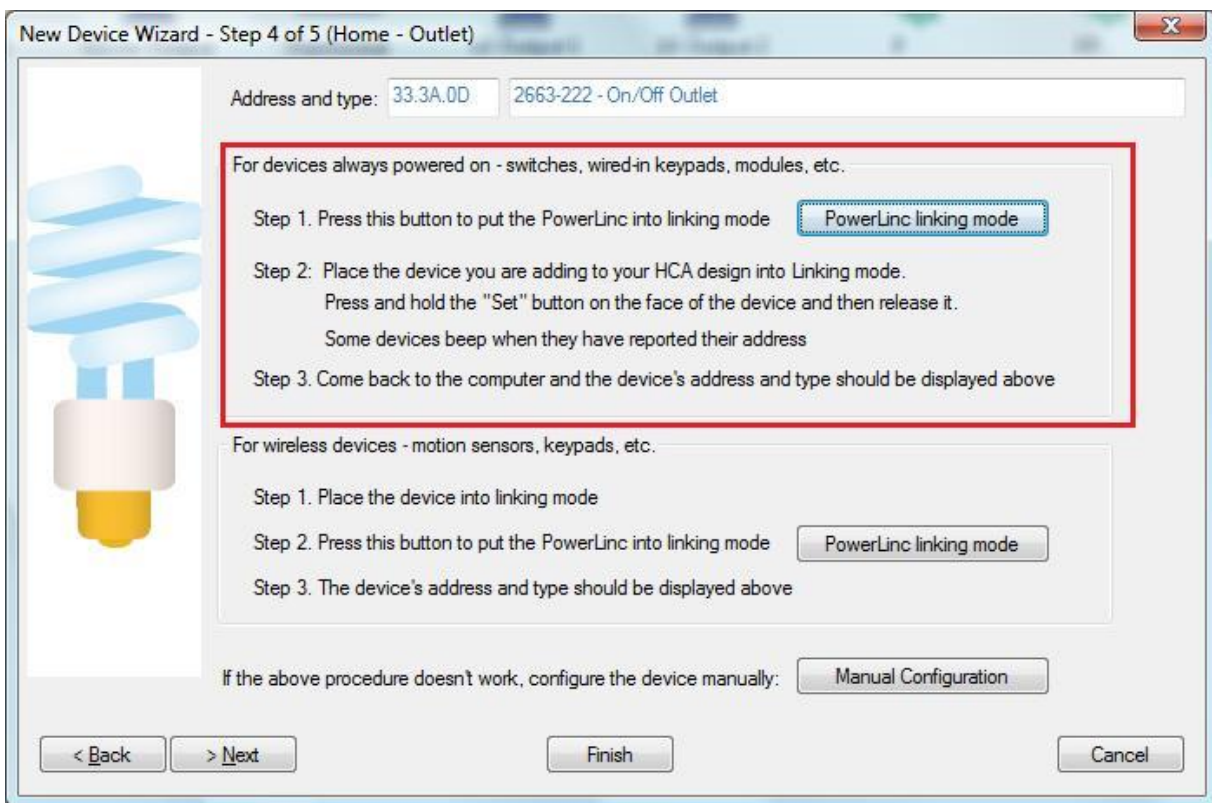
## Working with the Insteon On-Off Outlet

<http://www.smarthome.com/insteon-2663-222-on-off-outlet-white.html>

The complexity of using the On-Off Outlet in HCA is that there are two independently controllable devices in one package. In HCA each device represents a single controllable unit. Because of this, when the On-Off Outlet is added to your design, two HCA devices are added.

Using the On-Off Outlet with HCA starts by adding it to your design. You need to be able to access the "Set" button on it to establish a link to it. Use the button below the top outlet for this.

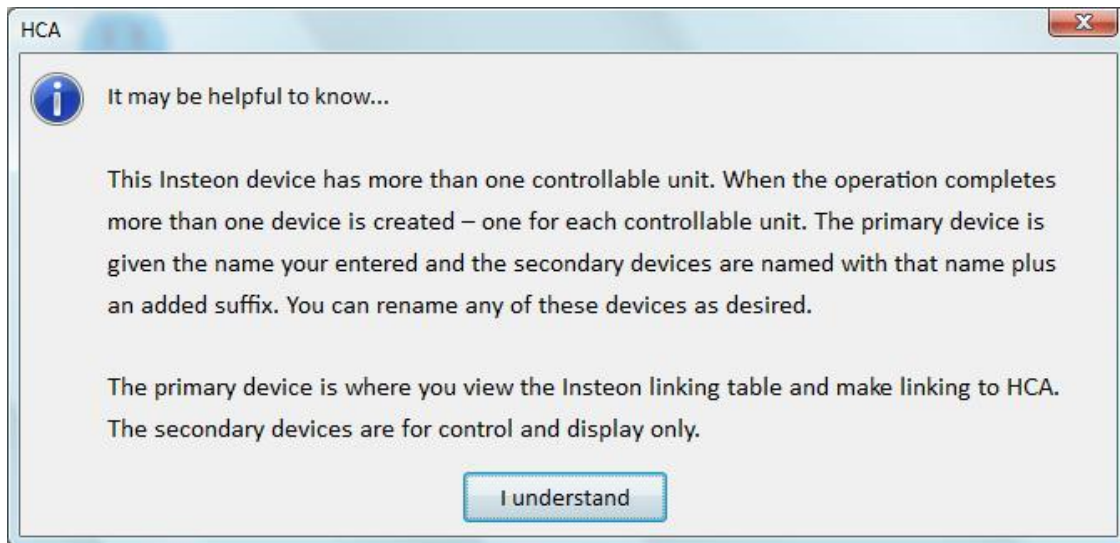
In the Add Wizard on step 3 choose "Insteon" as the manufacturer and then press the Next button. In step 4 press the dialog button to put the PowerLinc into linking mode before pressing the set button on the device to complete the link.



After you complete the Add Wizard, this popup messages appears:



# HCA Tech Note 209



As it says, you can rename the secondary device if you don't want it to remain with the "Bottom" suffix. You can also change its icon independently from the primary device.

When you open the properties of the "primary" device the "Insteon" and "Linking" tabs are available. When you open the properties of the "secondary" device the Insteon tab directs you to the primary device and the linking tab is not seen.

If you want to have HCA respond to messages sent when you press the buttons on the On-Off Outlet front – one controlling each outlet – they must be linked to HCA. On the "Linking" tab press the "Link" button. Both buttons become linked to HCA as part of that operation.

You can also use the Visual Scene Editor (VSE) with the On-Off Outlet. Using the VSE you can build scenes that are:

- Controlled by HCA to turn on or off the top and/or bottom outlets and other devices simultaneously
- Controlled by an Insteon controller (KeypadLinc, IO Module Input) that turns on or off the top and/or bottom outlets