

HCA Tech Note 301: Using the CM15 with HCA and Windows 10

NOTE: This technical note has been made obsolete by the discontinuation of support for the CM15. See the V15 release notes.

In order to use the CM15 with HCA under Windows 10 you have to do a bit of work to get the HCA device driver installed. Unfortunately, Windows really hates this as it wants all the drivers to come from the Windows Update site and that will get you the ActiveHome driver which doesn't work with HCA.

And to make matters slightly more difficult we have to stop Windows Update replacing the HCA CM15 driver with the one from the Windows Update site – which can be challenging.

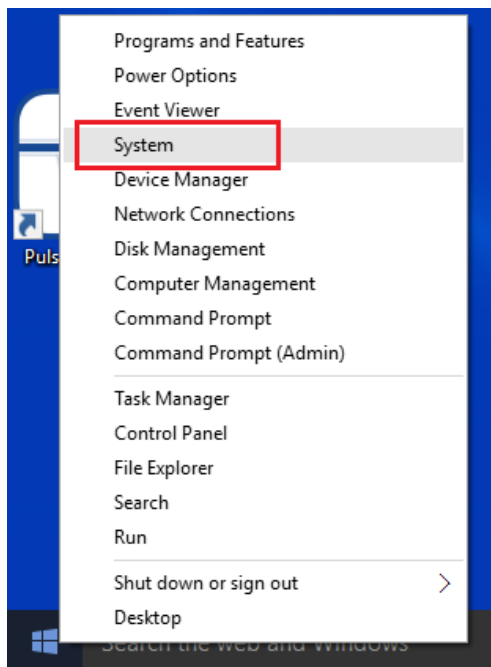
If you have not already connected the CM15 to your PC then the first thing to do is to connect it to your computer and let Windows install the driver for it. It will be the wrong driver but we have to start someplace.

Once that's done let's work on configuring Windows so that we can get the HCA CM15 driver installed.

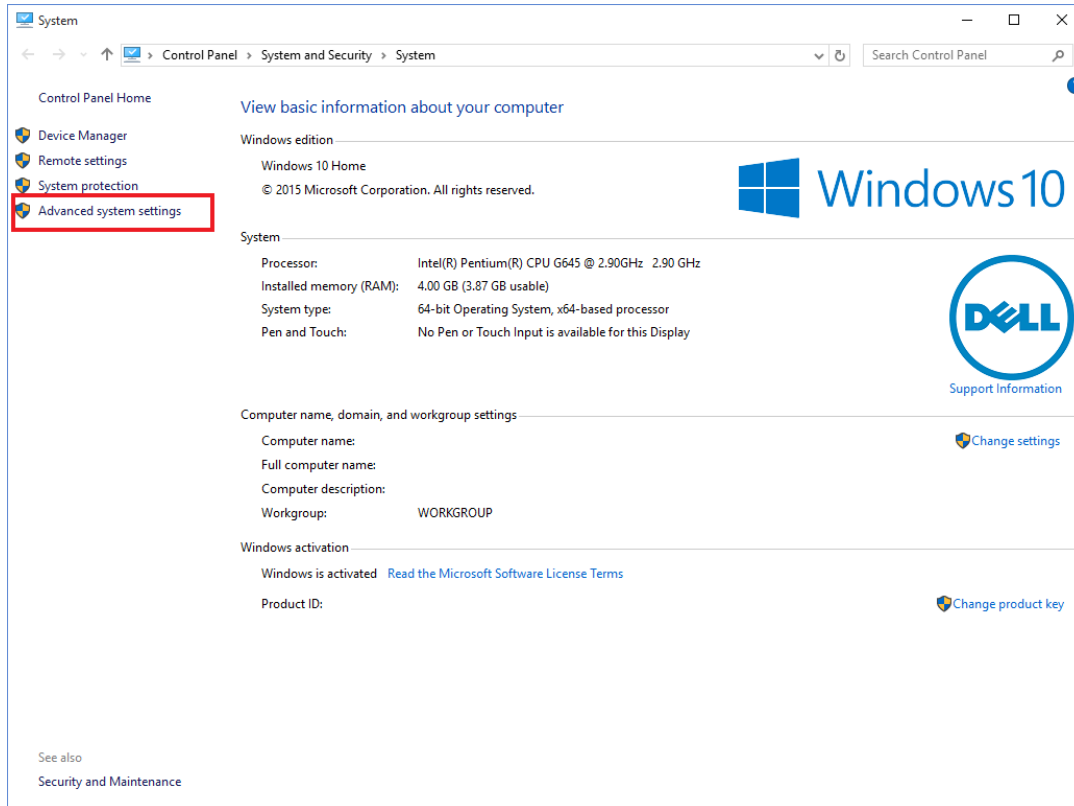
There are a few procedures to follow before we start install the driver. The first configures Windows to not replace the HCA CM15 driver with the ActiveHome one. The second procedure allows the HCA driver to be installed even though it isn't signed.

Step 1: Configure Windows 10 to not replace the HCA CM15 driver with the ActiveHome driver

To begin, right click on the "Start" button and select "System" from the popup menu.



Then follow the Advanced System Settings link.



The screenshot shows the Windows System Control Panel page. The left navigation pane contains the following links: Control Panel Home, Device Manager, Remote settings, System protection, and **Advanced system settings** (highlighted with a red box). The main content area displays system information for Windows 10 Home, including processor details (Intel(R) Pentium(R) CPU G645 @ 2.90GHz, 2.90 GHz), installed memory (4.00 GB, 3.87 GB usable), system type (64-bit Operating System, x64-based processor), and workgroup settings (WORKGROUP). The page also includes a Dell logo and a 'Support Information' link.

System

Control Panel > System and Security > System

Control Panel Home

View basic information about your computer

Windows edition

Windows 10 Home

© 2015 Microsoft Corporation. All rights reserved.

System

Processor: Intel(R) Pentium(R) CPU G645 @ 2.90GHz 2.90 GHz

Installed memory (RAM): 4.00 GB (3.87 GB usable)

System type: 64-bit Operating System, x64-based processor

Pen and Touch: No Pen or Touch Input is available for this Display

Computer name, domain, and workgroup settings

Computer name: [Change settings](#)

Full computer name:

Computer description:

Workgroup: WORKGROUP

Windows activation

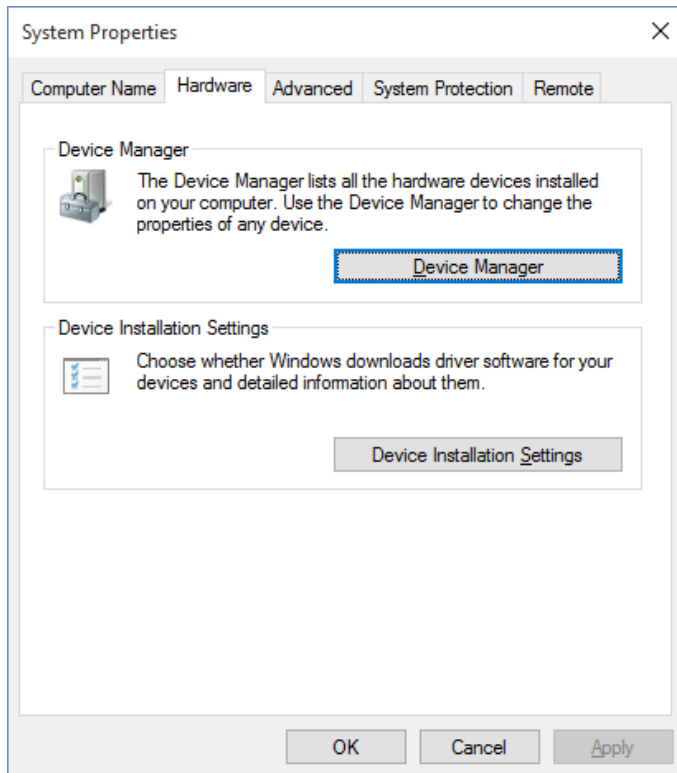
Windows is activated [Read the Microsoft Software License Terms](#)

Product ID: [Change product key](#)

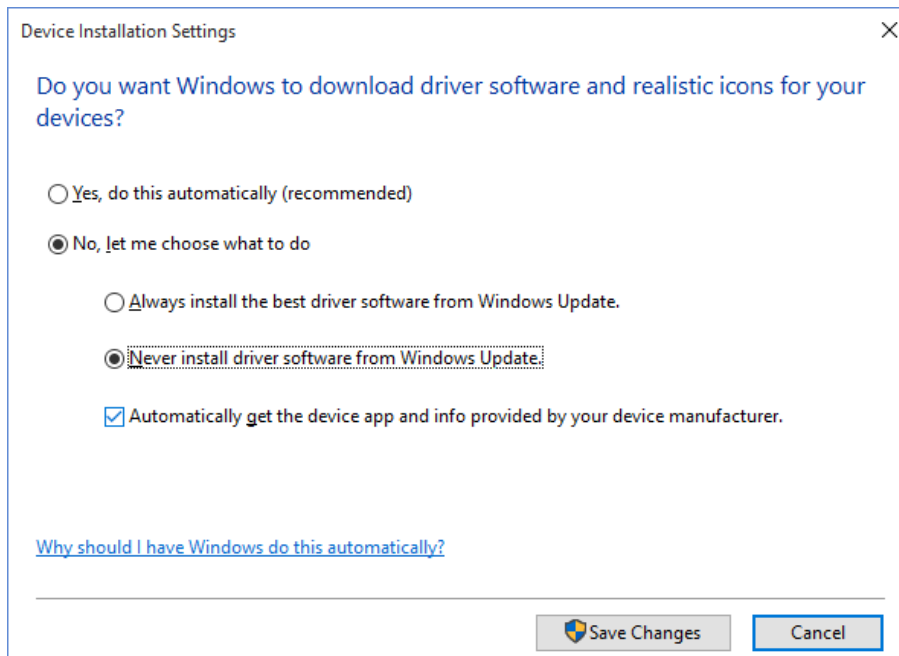
See also

Security and Maintenance

Choose the "Hardware" tab in the popup dialog.



Press the "Device Installation Settings" button. Note that depending upon your Windows 10 install, the dialog may not have all these options in it. The key is to pick the "No, let me choose..." option.



If the other options are in the dialog pick "Never install driver from Windows update". And Press "Save changes". Then OK out of the previous dialog and then close the control panel.

Step 2: Allow Windows 10 to install unsigned drivers

The next procedure is a bit involved – but not complicated - and is necessary to allow install of the HCA driver which is not signed. We don't have screen images for these steps but just follow along with this procedure. Some of the steps will time out if you wait too long so read over the instructions before you start and then you can move along without too much delay.

1. Press the "Windows" key on the keyboard to open the start menu
2. Click on "Settings" in the list at the lower left. It's just above the "Power" choice
3. Click on the "Update & Security" icon
4. Click on "Recovery" in the list at the left side of the "Update & Security" dialog.
5. Click on the "Restart now" button in the "Advanced startup" section. It takes a short time for the restart to happen and then the display shows "Choose an option" and has buttons for "Continue". "Troubleshoot", and "Turn off your PC". Press "Troubleshoot".
6. Click on "Advanced Options".
7. Click on "Startup Settings"
8. Click on the "Restart" button. The system restarts which takes a bit and then you get a text only screen that shows "Startup Settings" and shows nine options. You choose an option using the keyboard "F" keys at the top. Press the F7 key to "Disable driver signature enforcement". The PC restarts and you will have to login again.

Step 3: Download the HCA CM15 driver

The next step is to download the HCA CM15 driver from the HCA Support web site. Create a folder called "CM15" someplace on your disk. Your documents area is a good place. Follow this link and save the zip file into that folder. Depending upon your browser, it may download the zip file to your "Downloads" folder. If it does that then move it to the CM15 folder.

www.HCATech.com/download/CM15/winusbinf.zip

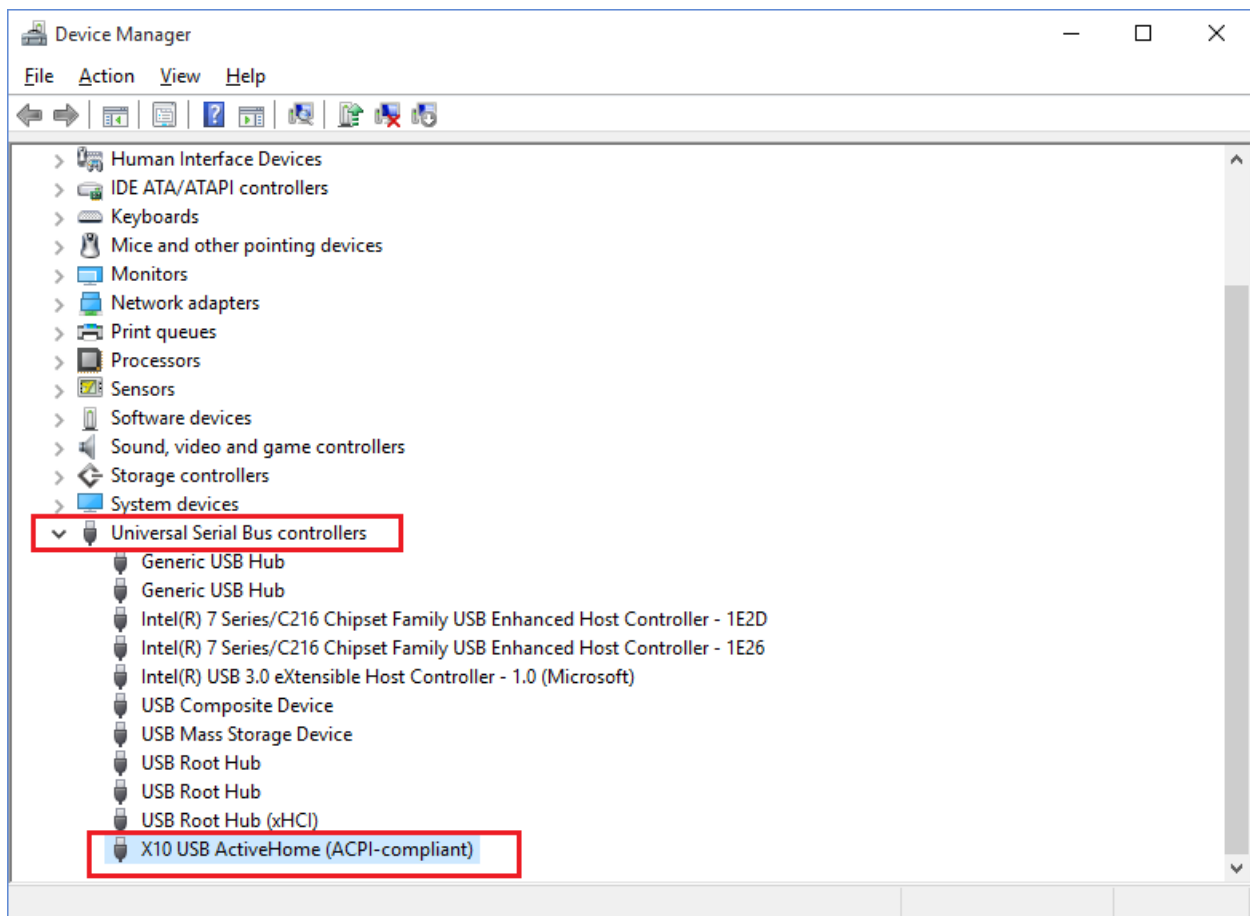
Using Windows Explorer, right click on the zip file and select "Extract all". The "Select a destination" dialog should show a path to the CM15 folder in your documents area and ending in a sub-folder called

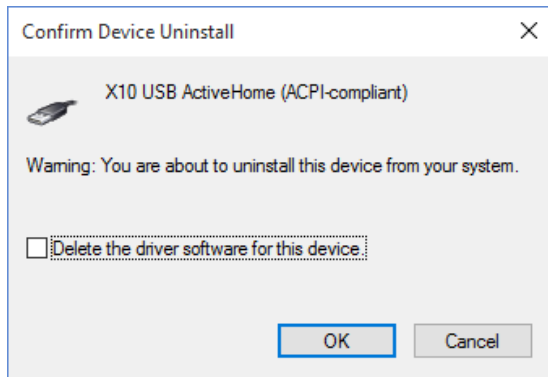
winusbinf. If it doesn't show that then change it to show that. Press the "Extract" button. It extracts 32 items.

Step 4: Remove the ActiveHome driver

Right click on the "Start" button and select "Device manager" from the popup menu. It's usually the 5th choice from the top.

In the Device manager find the "X10 USA ActiveHome" driver in the "Universal Serial Bus Controllers" section and right-click on it and choose "Uninstall" from the popup menu. In the popup tick the "Delete the driver software for this device" and press OK.

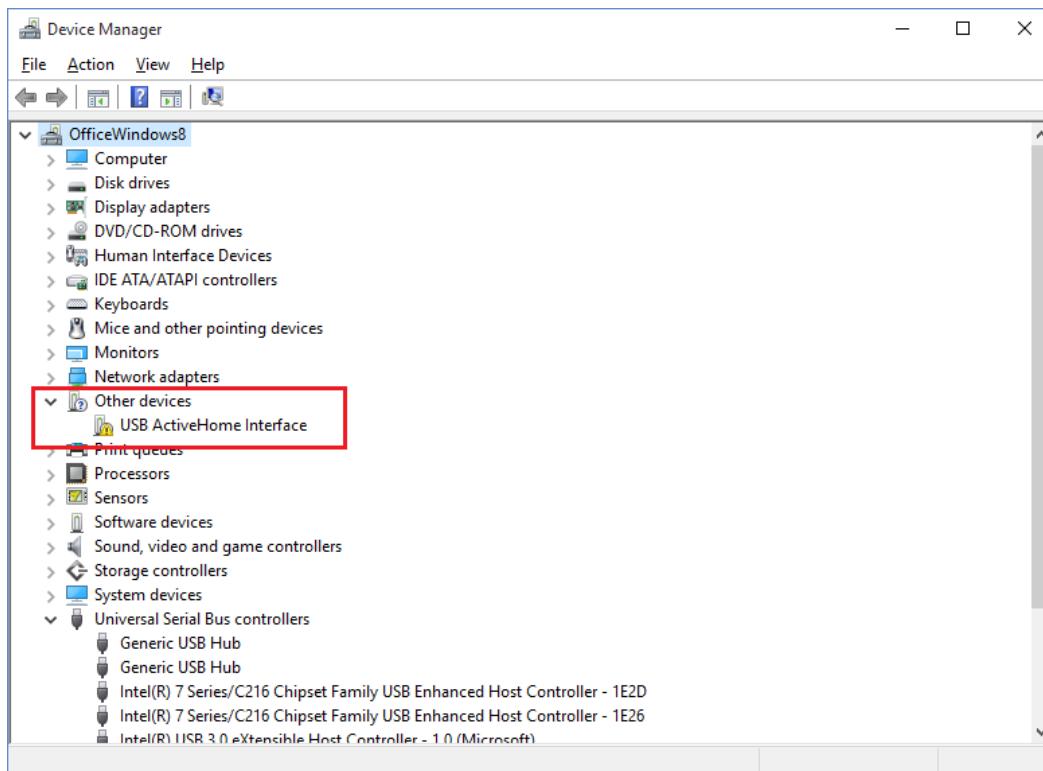




NOTE: The “Delete the driver software for this device” may not work. In fact, we have never seen it work on any of our machines. The Active Home driver file is called X10ufx2.sys and is in the Windows System32 Drivers folder. If you have problems with Windows going back to this driver – see note at the end of step 5A – you may need to manually remove this file.

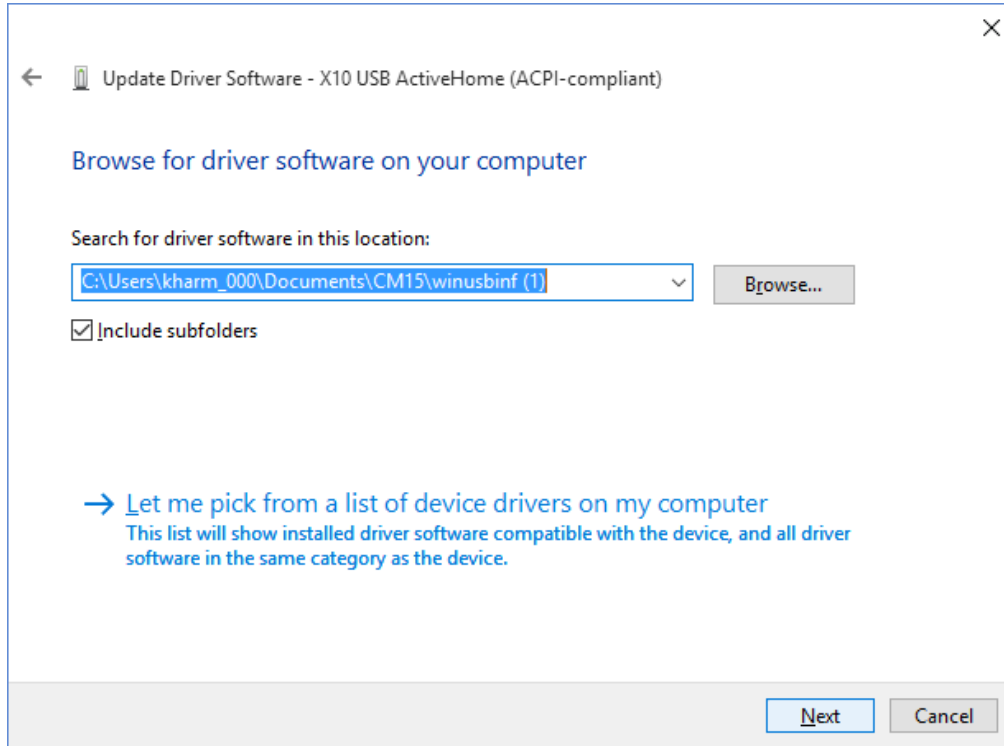
Step 5A: Get the HCA CM15 driver installed

Now unplug the CM15 and plug it in again. The Device Manager display updates and it may show it as an "Other device" or under “Universal Serial Bus controllers”. **If it shows up again in the same place labeled the same as before - "Active Home" - then skip the rest of this and go to step 5B.**



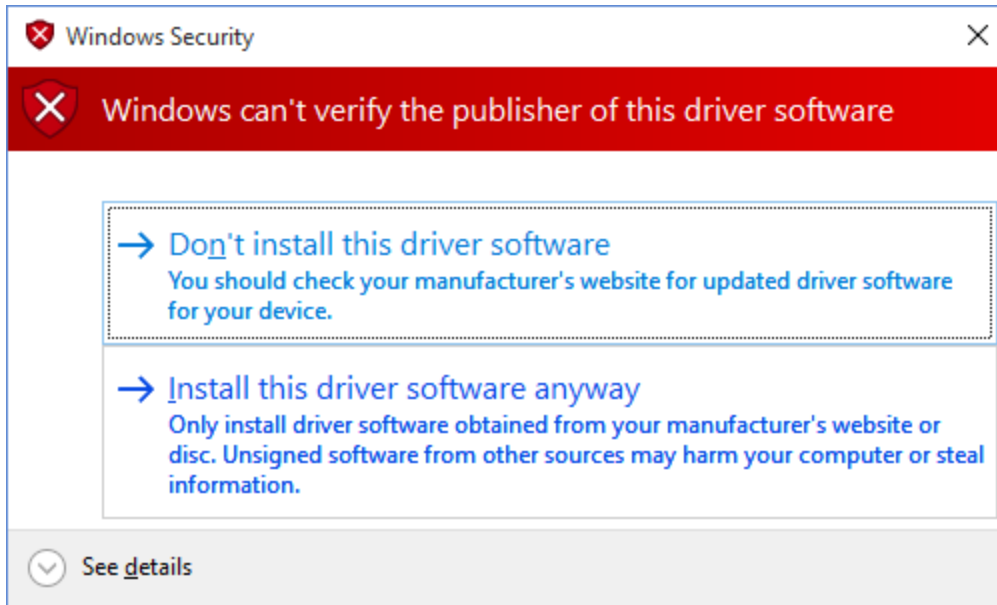
Right click on "USB ActiveHome Interface" and select "Update Driver software" from the popup menu.

Then choose "Browse my computer for driver software".



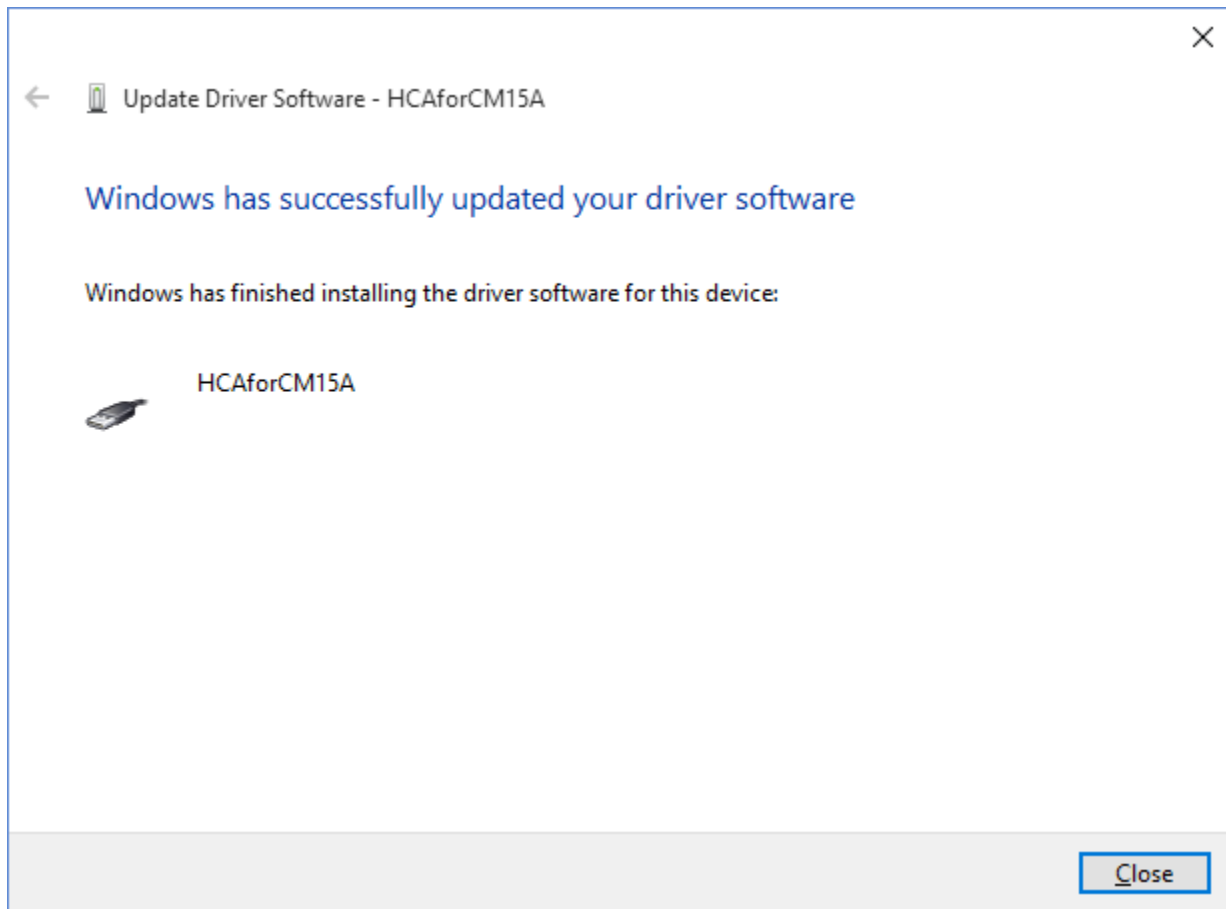
Use the browse button to locate the folder named "winusbinf" that was created when you unzipped the download. It should be a subfolder of the "CM15" folder you put the zip file into as described above.

And click "Next". Windows shows "Installing driver software" and then a VERY SCARY dialog appears:

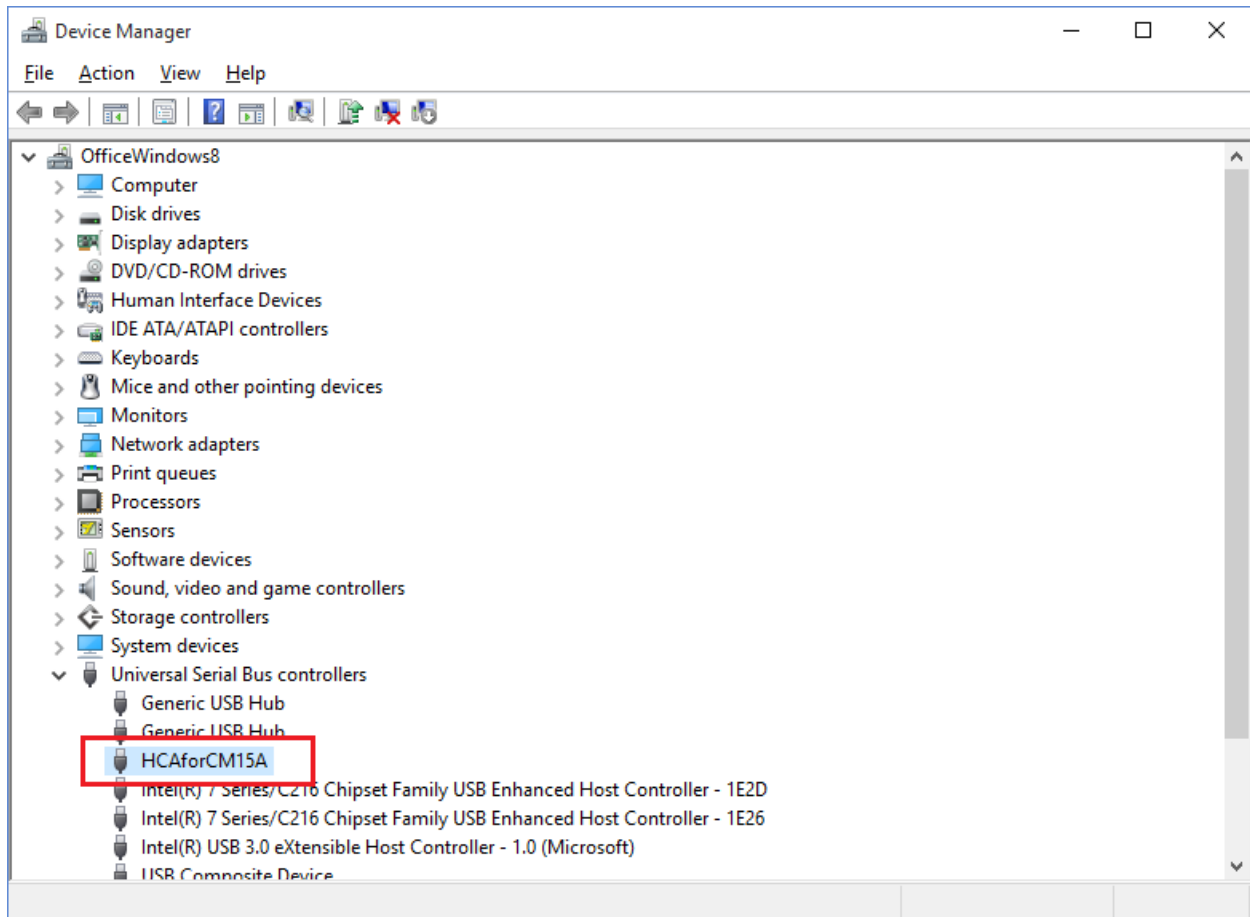


Press "Install this driver anyway". The driver is fine and has been installed by many HCA Users.

After the install completes, this appears:



And when that dialog is closed, the device manager updates and now lists the correct driver.



Close the Device Manager and then close the Control Panel if it is open.

NOTE: Windows is getting harder and harder on device drivers and may just go ahead and replace the HCA driver with the Active Home one again. Check out this link.

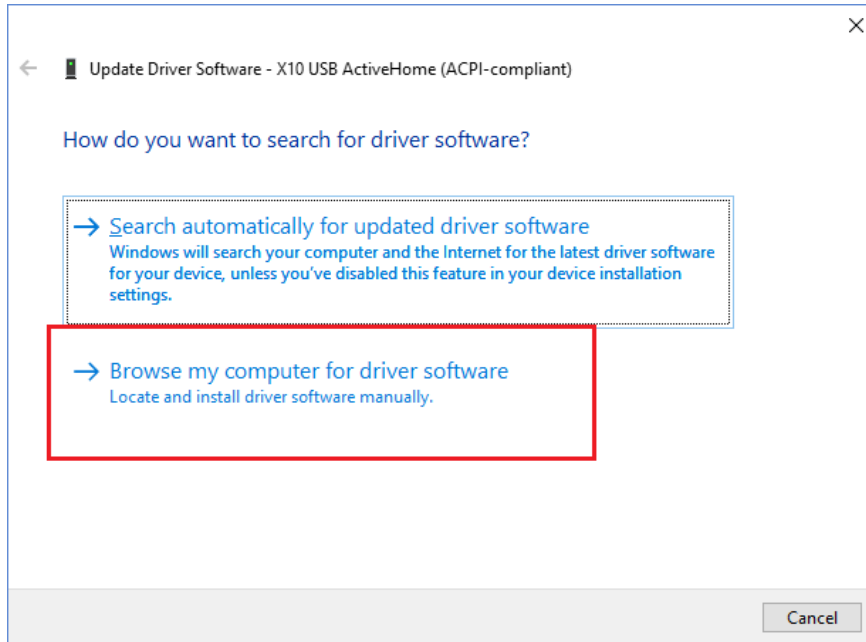
<http://www.howtogeek.com/223864/how-to-uninstall-and-block-updates-and-drivers-on-windows-10/>

We have followed the instructions given at that site with success but on different machines different things happened. Yes, this really is annoying to us too.

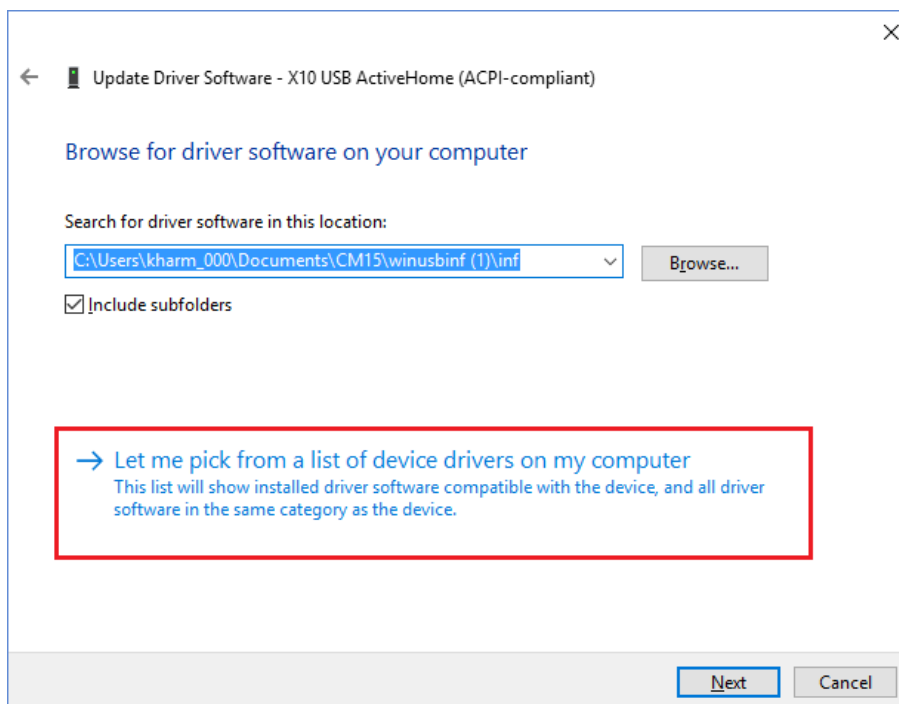
One thing that is VERY important: If you unplug the CM15 from the computer plug it back into the same USB port. That seems to make a big difference.

Step 5B: Use this if the CM15 seems to be stuck on the ActiveHome driver

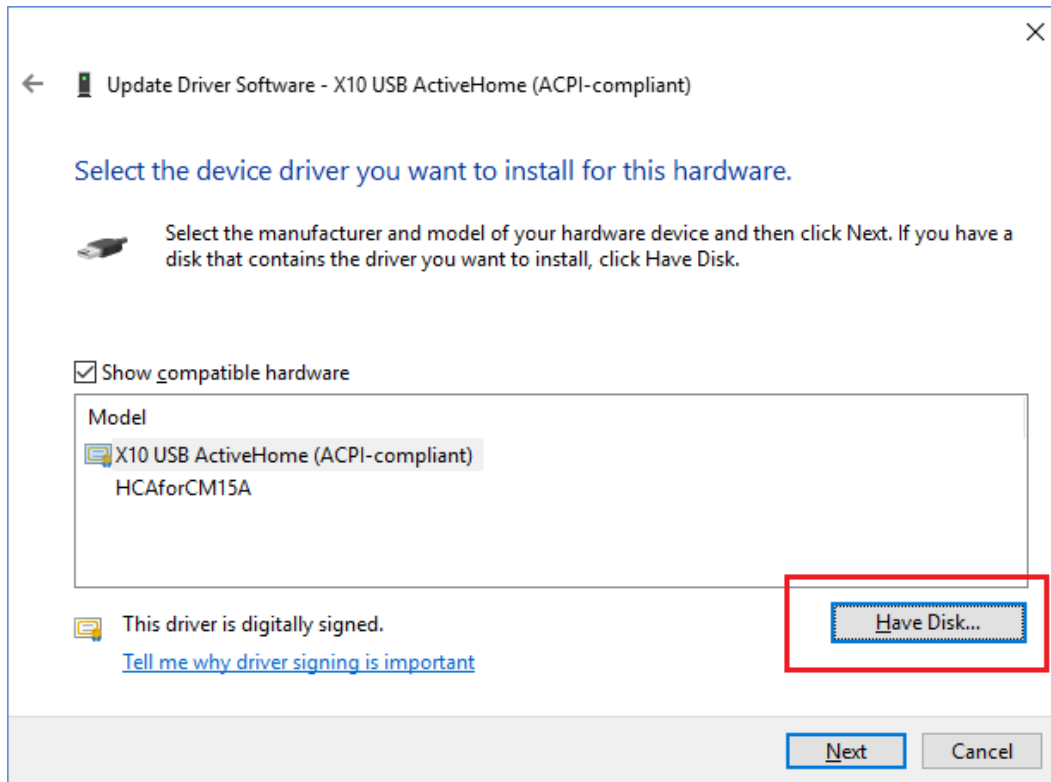
In the device manager right click on the USB Active Home device and select "Update Driver Software" from the popup menu. Click on the "Browse my computer for driver software" choice.



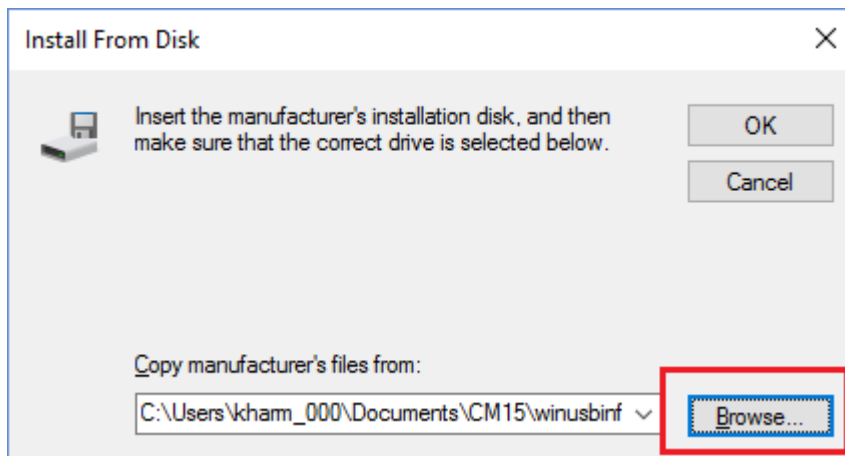
In the next step click on the "Let me pick..." option.



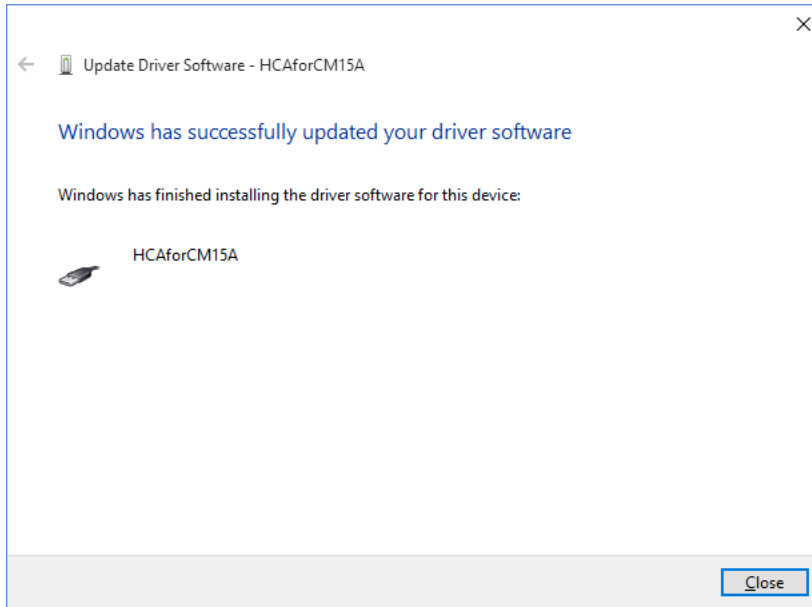
Click on the "Have Disk" button.



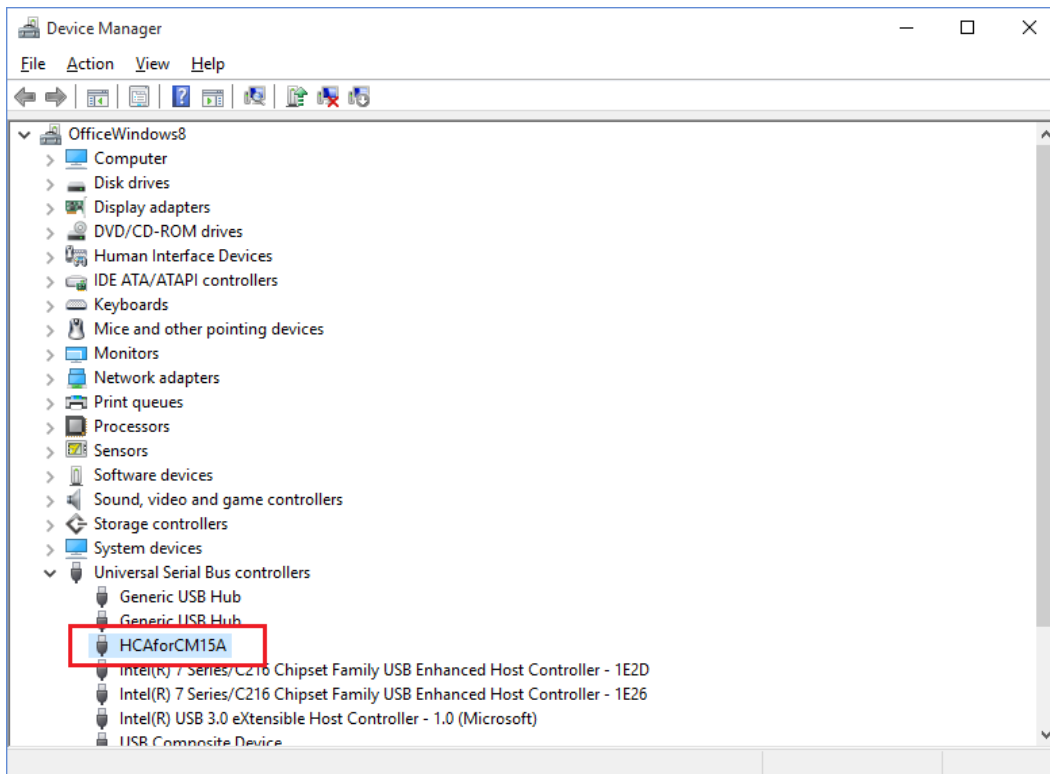
Use the browse button to locate the HCAforCM15.inf file that was part of the zip file extraction back in step 3. It is in the INF subfolder.



Close the dialog with OK. You may get the popup about the driver not being signed. If you do, then click on the "Install the driver anyway" choice. It should install and you see:



And when that dialog is closed, the device manager updates and now lists the correct driver.



Close the Device Manager and then close the Control Panel if it is open.

NOTE: Windows is getting harder and harder on device drivers and may just go ahead and replace the HCA driver with the Active Home one again. Check out this link.

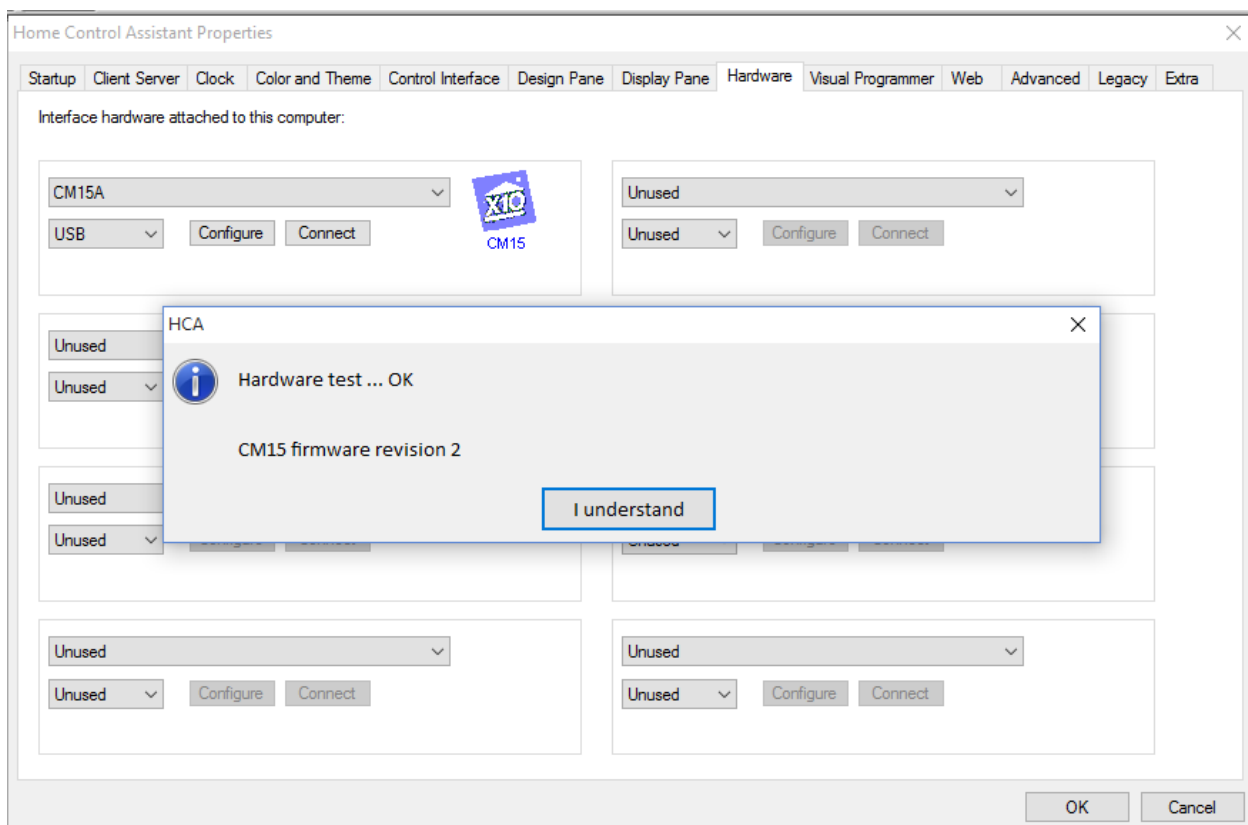
<http://www.howtogeek.com/223864/how-to-uninstall-and-block-updates-and-drivers-on-windows-10/>

We have followed the instructions given at that site with success but on different machines different things happened. Yes, this really is annoying to us too.

One thing that is VERY important: If you unplug the CM15 from the computer plug it back into the same USB port. That seems to make a big difference on keeping the HCA driver.

Step 6: Connect HCA to the CM15

Now we are finally ready to start HCA! In the Interfaces category, press the Configure button, choose CM15A as the type and press the connect button. It should connect ok and display the firmware version.



Have fun with your CM15!